

[Music Genres](#) ▾[Music Festivals](#) ▾[Music Artists](#) ▾[Music Gear](#) ▾

The Authoritarian Personality



Get The Authoritarian Personality essential facts below. View [Videos](#) or [join the The Authoritarian Personality discussion](#). [Add The Authoritarian Personality](#) to your PopFlock.com topic list for future reference or [share](#) this resource on social media.

The Authoritarian Personality

The Authoritarian Personality

is a 1950 [sociology](#) book by [Theodor W. Adorno](#), [Else Frenkel-Brunswik](#), [Daniel Levinson](#), and [Nevitt Sanford](#), researchers working at the [University of California, Berkeley](#), during and shortly after [World War II](#).

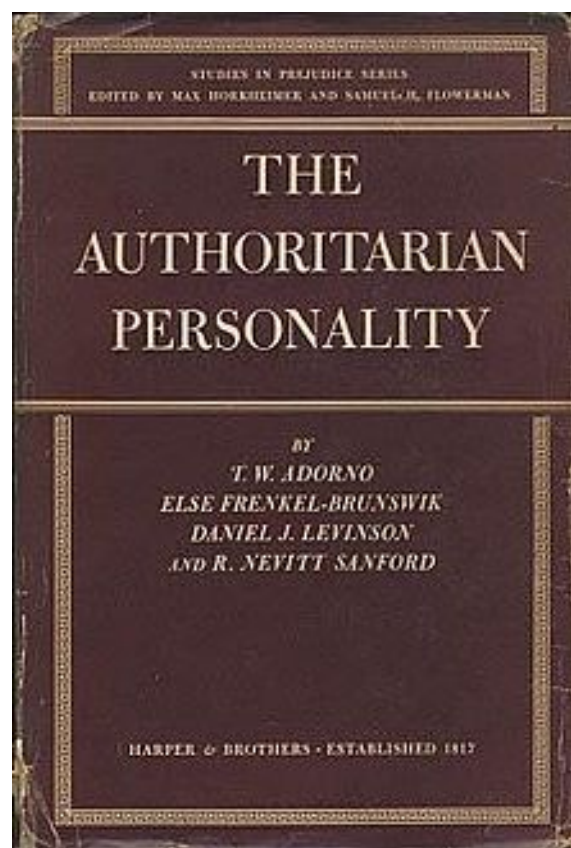
The Authoritarian Personality

The Authoritarian Personality "invented a set of criteria by which to define personality traits, ranked these traits and their intensity in any given person on what it called the '[F scale](#)' (F for [fascist](#)).\" The personality type Adorno et al. identified can be defined by nine traits that were believed to cluster together as the result of childhood experiences. These traits include conventionalism, authoritarian submission, authoritarian aggression, [anti-intellectualism](#), [anti-intraception](#), [superstition](#) and [stereotypy](#), power and "toughness", destructiveness and cynicism, projectivity, and exaggerated concerns over sex.

Though strongly criticized for bias and methodology, the book was highly influential in American social sciences, particularly in the first decade after its publication: "No volume published since the war in the field of social psychology has had a greater impact on the direction of the actual empirical work being carried on in the universities today."

Institutional context

The impetus of *The Authoritarian Personality* was the [Holocaust](#), the attempted genocidal extinction of European [Jews](#) by [Adolf Hitler](#)'s [National Socialist](#) party. Adorno had been a member of the "[Frankfurt School](#)", a group of philosophers and Marxist theorists who fled Germany when Hitler shut down their [Institute for Social Research](#). Adorno et al. were thus motivated by a desire to identify and measure factors that were believed to contribute to antisemitic and fascist traits. The book was part of a "Studies in Prejudice" series sponsored by the [American Jewish Committee](#)'s Department of Scientific Research.



Cover of the first edition

Authors	Theodor W. Adorno , Else Frenkel-Brunswik , Daniel Levinson , Nevitt Sanford
Published	1950
Publisher	Harper & Brothers
Media type	Print
ISBN	978-0-06-030150-7

Sources and influences

The Authoritarian Personality was based in part on earlier Frankfurt School analyses undertaken in Germany, but with a few key changes. First, their Marxist and radical roots were downplayed. For example, the earlier "authoritarian personality/revolutionary personality" axis was changed to an "authoritarian personality/democratic personality" axis in America. Thus, values and behaviors earlier associated with revolutionary Marxism were now associated with support for [democracy](#). Second, the book abandoned and/or modified traditional Marxist sociological and economic explanations for human behavior in favor of psychological explanations, earning scorn from more orthodox Marxists.

Generally, Adorno et al. took an [antipositivist](#) position; More generally, the Frankfurt School has been critical of [reductionism](#) and the [third-person perspective](#) in the social sciences. Instead, it recognizes that social science research is inevitably value-laden, which calls for a model of scientist who is a self-reflective interpreter, rather than a technical problem-solver. Furthermore, it assigns a practical purpose in social science. Following a marxist tradition, it requires that theories in social science should not only describe and explain the social world, but also should serve a human emancipation agenda in all circumstances of oppression and dominance. This is a different approach in [philosophy of science](#) than [falsification](#), more popular in the natural sciences.

Content

A central idea of *The Authoritarian Personality* is that authoritarianism is the result of a [Freudian](#) developmental model. Excessively harsh and punitive parenting was posited to cause children to feel immense anger towards their parents; yet fear of parental disapproval or punishment caused people to not directly confront their parents, but rather to identify with and idolize authority figures. Moreover, the book suggested that authoritarianism was rooted in suppressed [homosexuality](#), which was redirected into outward hostility towards the father, which was, in turn, suppressed for fear of being infantilized and castrated by the father. This hypothesis was consistent with prevailing psychological theories of the time, and even though Frenkel-Brunswik reported some preliminary support, empirical data have generally not confirmed this prediction. Authoritarianism was measured by the [F-scale](#). The "F" was short for "pre-fascist personality." Another major hypothesis of the book is that the authoritarian syndrome is predisposed to [right-wing](#) ideology and therefore receptive to [fascist](#) governments.

Methodology

Based on Brown (2004)

The study employs both quantitative and qualitative components. The first part of the research resembles a survey type of research with structured questionnaires. Based on the scores on the questionnaires, a smaller number of participants was elected for [clinical interviews](#) and administration of the [Thematic Apperception Test](#). Interviews were coded with the techniques of [content analysis](#).

Sample

"The majority of the subjects could be characterized as white, non-Jewish, native-born, middle-class Americans and the authors guessed that their findings would hold for this population"

[Critique point]. The individuals were sampled from formal organizations. There are reasons to believe that there are systematic difference between such a sample and the aforementioned population (see section Overall Criticism).

Response format

[Likert type items](#) ranging from -3 to +3 without a middle point.

Psychometric scales

- Anti-Semitism Scale
- Ethnocentrism Scale
- Political & Economical Conservatism Scale

Anti-Semitism scale

This is a listing of the content categories featured in the items. These traits are attributed to [Jewish](#) people.

- *Offensive* (conceited, sensual, dirty)
- *Threatening* (ruthless, competitive, radical)
- *Attitudes* (discriminative action to be taken)
- *Seclusive* (clanish, keeping apart from gentiles)
- *Intrusive* (desire to intrude where not welcome)

All items were phrased in affirmation of the Anti-Semitic sentiment. Brown (2004, p. 48), together with many others, criticizes this choice as "unwise".

The items were phrased in a superficially moderate language, which nonetheless conveyed the saliency of Jews to the respondent and a negative sentiment towards them

Ethnocentrism

Split-half reliability for the scale was .91 (high). The correlation between *Ethnocentrism* and *Anti-Semitism* scales was .80 (relatively high). This result is "evidence that antagonism to the culturally unlike is a generalized sentiment"

Political and economical conservatism

Split-half reliability for PEC scale was .73 (moderate). The scale's correlation with A-S and E was not strong, but in none of the groups was it negative. "[...] neither ethnocentrism nor Anti-Semitism ever showed a tendency to go with leftist liberal views."

F Scale

The F scale targets an authoritarian, anti-democratic personality profile that makes a person susceptible to Fascist propaganda. The items were written in accordance to fascist propaganda materials as well as *priory held* TAT protocol data and interviews with ethnocentric participants.

- *Conventionalism*: Adherence to conventional values.
- *Authoritarian Submission*: Towards ingroup authority figures.
- *Authoritarian Aggression*: Against people who violate conventional values.
- *Anti-Intraception*: Opposition to subjectivity and imagination.
- *Superstition and Stereotypy*: Belief in individual fate; thinking in rigid categories.
- *Power and Toughness*: Concerned with submission and domination; assertion of strength.
- *Destructiveness and Cynicism*: hostility against human nature.
- *Projectivity*: Perception of the world as dangerous; tendency to project unconscious impulses.
- *Sex*: Overly concerned with modern sexual practices.

Across various participant groups, the average item-total correlation was 0.33. Subsequent factor analysis confirmed a one-dimensional structure of these content subsets of items (Eysenck 1954, p 152, ref by Brown, p. 53).

The first form of the F-Scale correlated 0.53 with A-S, 0.65 to E and 0.54 to PEC. The scale was revised by dropping items with low item-total correlations and/or low predictive value of A-S and E scores. The revised form correlated by 0.75 to a combined A-S/E scale, and 0.57 to PEC. Ethnocentrism, anti-Semitism and potentiality for fascism were inter-related to each other, as well as to conservatism, although not as prominently.

Correlations with IQ, SES, and education

Ethnocentrism is negatively correlated with both IQ and years of education. Subsequent analyses by Christie showed that education is the mediating factor in this set of relationships. Intelligence is not as strongly correlated to *E per se if years of education are partialled out, the partial correlation being as small as -.20*. Christie also estimated the expected correlation between "either IQ and F scores or years of education and F scores for a representative cross-sectional sample, range between -.50 and -.60".

Clinical and projective data

Interviews

The interviewers were instructed to obtain information of the following areas. There were more specific instructions and points of emphasis within each of these areas.

- Vocation
- Income
- Religion
- Clinical Data
 - Family Background: Sociological Aspects
 - Family Figures: Personal Aspects
 - Childhood
 - Sex
 - Social Relationships
 - School
- Politics
- Minorities and Race

[Critique Point] Interviewers (but not coders) were aware of the participants responses and were instructed to study them before interview. This choice

was also "severely criticized"

"In considerable degree, [...], the projective data confirm the covariation of implicit antidemocratic trends with prejudice which was demonstrated by the questionnaire data".

Construction of personality

- Self Glorification vs Objective Self Appraisal
- Conventional Idealization of Parents vs Objective Appraisal
- Family status-concerned vs Family status-relaxed

Additional: Coping with Ambivalence about Self and Others, Lack of acceptance of aggressive feelings towards the parents, Projection of sexual and aggressive impulses to minorities, and its psychological function.

"Repression of impulses leads to projection which functions as rationalization for an expression."

[Critique Point]: Coding and Interpretation is informed by psychoanalytic theory.

Cognitive style

- Rigidity vs Flexibility
- Intolerance of Ambiguity vs *Tolerance of Ambiguity*

(see [Jaensch's Typology](#))

[Critique Point] Due to the coders having access to the protocols, the dependency between prejudice and rigidity may be biased.

Overall criticism

Sampling

Participants were recruited through formal organizations. Christie reports though that people belonging to at least one organization differ significantly from people that do not belong to organizations at all. Thus the sample taken was not representative of white, non-Jewish, middle-class, Americans. The correlations between A-S, E and F vary in different samples, subsequent studies showed. However, a negative correlation was never found between those scales.

Acquiescence Response Set

Couch and Keniston (1960) addressed the problem of the items being all phrased in an affirmative direction towards anti-Semitism. In a large number

of psychometric instruments, they showed that the tendency to respond affirmatively (Yeasayers) or negatively (Naysayers) is a relevant psychological factor despite the content of specific questionnaires.

It is now accepted that a greater proportion of variance can be attributed to individual response patterns rather than the targeted Anti-Semitic attitude. This poses a [validity](#) problem: The scale may not accurately record the variable it is intended to measure.

Bass found a .20 correlation between F-scale and an item-by-item reversed version. (expected correlation if the phrasing played no role would be -1.00) Christie used more elaborate reversal of items accounting for linguistic and psychological subtleties preserving the original rationale of the items preparation. See section on Overall Criticism.

Criticisms of content analyses

- Interviewer Knowledge of Questionnaire Responses
- Examination of Data in Advance of Coding
- Coding Multiple Variables from the Same Content
- Reporting Inter-rater Reliability for Too General Coding Categories

Explanation in terms of SES rather than repression

"We can easily imagine plausible reasons for the association of each authoritarian trait with the cluster that includes low IQ, little education, and low SES and so the explanation of covariation among the traits is simply their several particular ties to the same underlying factors. [...] [However] [...] Norms are not put together at random or incidentally. When they stabilize into a particular combination it must be because that is a combination that works for human personalities" (Brown, p. 75)

Left wing authoritarianism

A number of studies have examined the [external criterion validity](#) of F scale, with various demographic and political groups. Such groups included: German cosmetic factory workers (Cohn and Carsch, 1954); English fascists and communists, compared to 'politically neutral' soldiers (Coulter, 1953). Both studies found high scores (>5) in F-Scale.

However, the Coulter study also found the Communists scored higher in F-Scale than the politically neutral group. Eysenck (1954, ref. by Brown, p. 80) commented that Coulter's results indicate that the F-Scale actually measures general authoritarianism, rather than fascist tendencies in particular. (see [Left-Wing Authoritarianism](#))

Christie (1956) attributed Coulter's findings to sampling fluctuation, pointing out the politically neutral group was unusually low in F-Scale, compared to 50 known group means at the time. Rokeach (1960) obtained F-Scale scores from 13 Communist college students in England. Their mean was the lowest of all known groups.

Brown, (2004, p. 80) states: "... the Berkley researchers seem to have been correct in their belief that the F-Scale is a measure of fascism."

Authors and conflicts

Sanford and Levinson were both psychology professors at Berkeley. They did much of the preliminary work on ethnocentrism and statistical measurement. Frenkel-Brunswik examined personality variables and family background with a series of interview studies. Adorno provided a political and sociological perspective to the book. Although Adorno's name heads the alphabetical list of authors, he arrived late to the project and made a relatively small contribution. Adorno, in a 1947 letter to Horkheimer, said that his main contribution was the F-scale, which in the end was the "core of the whole thing." An agreement among the authors held that each one was to sign the individual chapters to which he or she had contributed, and that all four were to sign the chapter on the F-scale; Adorno was credited in 5 of the 23 chapters.

The initially planned title for the book was *The Fascist Character and the Measurement of Fascist Trends*, but as early as 1947 Adorno feared that the assistants at Berkeley would try to sanitize it to a more innocuous title like *Character and Prejudice*. The final title was the result of a compromise.

Responses

The Authoritarian Personality inspired extensive research in [psychology](#), [sociology](#), and [political science](#) during the 1950s and early 1960s on the relation between personality traits, behavior, and political beliefs. *The Authoritarian Personality* has often provoked polarized responses: "The Berkeley study of authoritarian personality does not leave many people indifferent."

The study "has been subjected to considerable criticism" since the 1950s, particularly for various methodological flaws, including [sample bias](#) and poor [psychometric](#) techniques.

In 1973, Gaensslen et al. found that, contrary to predictions by Adorno et al., rigidity/dogmatism is not intrinsically maladaptive; e.g., rigidity can be

associated with discipline and [productivity](#).

In 1980, sociologist [J.J. Ray](#) argued that the project of *The Authoritarian Personality* was seriously flawed on several points: for not asking questions regarding [libertarian](#) politics (which according to Ray are typically more anti-authoritarian than right- or left-wing politics); for failing to demonstrate that authoritarian/right-wing beliefs are correlated with [psychopathology](#); and, most importantly, for failing to demonstrate that authoritarian beliefs are associated with authoritarian behavior. In 1993, over a decade later, the latter point was also criticized by Billings, et al.

The book concludes that right-wing, authoritarian governments produce hostility towards racial, religious or ethnic minorities. Psychologist [Bob Altemeyer](#) argued against that conclusion, saying that Fascist Italy was not characterized by antisemitism, and that Jews occupied high positions in Mussolini's government until pressure from Hitler disenfranchised these Jews.

Rubenstein's research in Israel revealed that Orthodox Jews scored higher on right wing politics and authoritarianism as traits than Reform Jews, and that both groups scored higher than Secular Jews. However, it cannot be said that there is no relationship between traits of Right-Wing Authoritarians and antisemitism. In fact, Adorno's nine traits of the "F scale" are rather general and have been thought to identify fascist as well as anti-Semitic individual attributes. The fact that Rubenstein himself affirms that "the results confirm the validity of the RWA" represents a particularly interesting outcome: Orthodox and Reform Jews in Israel are classified closer to the fascist and anti-Semitic traits, as thought in 1950 by Adorno et al., compared to Secular Jews in Israel.

Some observers have criticized what they saw as a strongly politicized agenda to *The Authoritarian Personality*. Social critic [Christopher Lasch](#) argued that by equating mental health with left-wing politics and associating right-wing politics with an invented "authoritarian" pathology, the book's goal was to eliminate antisemitism by "subjecting the American people to what amounted to collective psychotherapy--by treating them as inmates of an insane asylum." *The Authoritarian Personality* remains widely cited in the social sciences and continues to inspire research interest today.

Hyman and Sheatsley 1954

"Our major criticisms lead us inevitably to conclude that the authors' theory has not been proved by the data they cite".

Brown 2004

"The most serious defects in the questionnaire work are the inadequate sampling methods and the operation of response sets. [In spite of that] there is a substantial residual probability that the chief conclusion of the questionnaire work is correct: attitudes of Anti-Semitism, ethnocentrism, and authoritarianism do generally go together. [...] some of the findings of the questionnaire study were replicated in the projectives study, and while this latter work has its own deficiencies, some account must be taken for the convergence in the two sets of data."

"Perhaps the least well supported of all the findings in the Berkley study are those concerning the genesis of authoritarianism in childhood. [...] However, Frenkel-Brunswik has directly studied prejudice in childhood and adolescence. She reports confirmation of most of the original findings."

Christie and Cook 1958

Christie and Cook (1958) cite 230 titles relating to The Authoritarian Personality and they conclude that:

"...the overall picture shows consistency of findings in many of the most intensively studied areas. The E and F scales are found to be significantly correlated in a wide array of samples and predictions of relationships with attitudinal measures are almost invariably confirmed"

See also

- [Ambiguity tolerance](#)
- [Authoritarian personality](#)
- [Narcissistic Personality Disorder](#)
- [Right-wing authoritarianism](#)
- [Psychohistory](#)
- [*The Mass Psychology of Fascism*](#)

Notes and references

1. [^] Codevilla, Angelo (2010-07-16) [America's Ruling Class Archived 25 February 2011 at the Wayback Machine.](#), *The American Spectator*
2. [^] Adorno, T. W., Frenkel-Brunswik, E., Levinson, D. J., & Sanford, R. N. (1950). *The authoritarian personality*. New York: Harper and Row (pp. 228).
3. [^] [Adorno and the political](#) By Espen Hammer p.62

4. [^] [Mangus A. R. \(1954\)](#). "Studies In The Scope And Method Of "The Authoritarian Personality" (Book)". *Rural Sociology*. 19 (2): 198-200.
5. [^] [Wolfe Alan \(2005\)](#). "'The Authoritarian Personality' Revisited". *Chronicle of Higher Education*. 52 (7): B12-B13.
6. [^] [Glazer, Nathan. \(1954\)](#). "New light on The Authoritarian Personality: A survey of recent research and criticism." *Commentary* 17 (March), pp. 289-297.
7. [^] [Horkheimer, Max; Flowerman, Samuel H \(1950\)](#). Foreword to *Studies in Prejudice in "The Authoritarian Personality"*. Norton Library. pp. v-vi.
8. [^] [American Jewish Committee News](#), 15 March 1950.
9. [^] [Jay, Martin \(1973\)](#). *The Dialectical Imagination: A History of the Frankfurt School and the Institute of Social Research 1923-1950*. London: Heinemann. [ISBN 0-435-82476-7](#), p. 273
10. [^] [Jay 1973](#), 227.
11. [^] [Adorno stated](#): "[The TAP questionnaire] was produced in a manner which does not correspond at all to the usual image of positivism in social science..." quoted in [Wiggershaus, R. \(1994\)](#). *The Frankfurt School: Its History, Theories, and Political Significance*, translated by M. Robertson. Cambridge, MA: MIT Press, p. 373.
12. [^] "[W]e never regarded the theory simply as a set of hypotheses but as in some sense standing on its own feet, and therefore did not intend to prove or disprove the theory through our findings but only to derive from it concrete questions for investigation, which must then be judged on their own merit and demonstrate certain prevalent socio-psychological structures" [Adorno, T. W. \(1969\)](#). "Scientific Experiences of a European Scholar in America" In *The Intellectual Migration: Europe and America, 1930- 1960*, eds. D. Fleming & B. Bailyn. Cambridge, MA: Harvard University Press., p. 363.
13. [^] [Bohman, James \(2016\)](#). "[Critical Theory](#)". In [Edward N. Zalta \(ed.\)](#). *The Stanford Encyclopedia of Philosophy (Fall 2016 ed.)*. *Metaphysics Research Lab, Stanford University*.
14. [^] "The forbidden action which is converted into aggression is generally homosexual in nature. Through fear of castration, obedience to the father is taken to the extreme of an anticipation of castration in conscious emotional approximation to the nature of a small girl, and actual hatred to the father is suppressed" [Adorno, T. W., E. Frenkel-Brunswik, D. J. Levinson, & R. N. Sanford. \(1950\)](#). *The Authoritarian*

Personality . Publication No. 3 of the American Jewish Committee Social Studies Series. New York: Harper & Brothers., p. 192.

15. ^ [Altemeyer, B. \(1988\). *Enemies of freedom: Understanding right-wing authoritarianism.*](#)
16. ^ [a b c d e f g h i j k l m n o p q r s t](#) Brown, Roger (2004). "The Authoritarian Personality and the Organization of Attitudes". In John T. Jost, Jim Sidanius (eds.). *Political Psychology: Key Readings.* Psychology Press. pp. 45-85. [ISBN 978-1-84169-070-4.](#)
17. ^ [Couch, A.; Keniston, K. \(1960\). "Yeasayers and naysayers: agreeing response set as a personality variable". *Journal of Abnormal and Social Psychology.* 60: 151-174. \[doi:10.1037/h0040372.\]\(#\) \[ISSN 0096-851X.\]\(#\) \[PMID 13812335.\]\(#\)](#)
18. ^ [Stone, W. F., Lederer, G., and Christie, R. \(1993\). Introduction: Strength and weakness. In Stone, W. F., Lederer, G., and Christie, R. \(Eds.\). *Strength and weakness: The authoritarian personality today.* New York: Springer-Verlag.](#)
19. ^ [a b c](#) Wiggershaus, Rolf (1995) [The Frankfurt School: Its History, Theories, and Political Significance](#), p.411
20. ^ [Brown, R. \(1965\). *Social Psychology.* London: Collier-Macmillan, p. 479.](#)
21. ^ [Don Stewart and Thomas Hoult \(1959\). "A Social-Psychological Theory of the Authoritarian Personality". *The American Journal of Sociology* Vol. 65, No. 3 \(Nov., 1959\), pp. 274-279.](#)
22. ^ [Christie, Richard; Jahoda, Marie, eds. \(1954\). *Studies in the scope and method of "The Authoritarian Personality".* Glencoe, Ill.: Free Press.](#)
23. ^ [Gaensslen H.; May F.; Woelpert F. \(1973\). "Relation Between Dogmatism and Anxiety". *Psychological Reports.* 33 \(3\): 955-58. \[doi:10.2466/pr0.1973.33.3.955.\]\(#\)](#)
24. ^ [Ray, J.J. \(1980\). "Libertarians and the Authoritarian Personality". *The Journal of Libertarian Studies*, Vol. IV, No. 1, Winter 1980, pp. 39-43.](#)
25. ^ [Billings S. W.; Guastello S. J.; Reike M. L. \(1993\). "A comparative assessment of the construct validity of three authoritarianism measures". *Journal of Research in Personality.* 27 \(4\): 328-348. \[doi:10.1006/jrpe.1993.1023.\]\(#\)](#)
26. ^ [Altemeyer, B. \(1981\). *Right-Wing Authoritarianism.* Winnipeg: University of Manitoba Press., p. 28.](#)
27. ^ [Rubenstein G \(1996\). "Two peoples in one land: A validation study of](#)

Altemeyer's Right-Wing Authoritarianism Scale in the Palestinian and Jewish Societies in Israel". Journal of Cross-Cultural Psychology. 27 (2): 216-230. doi:10.1177/0022022196272005.

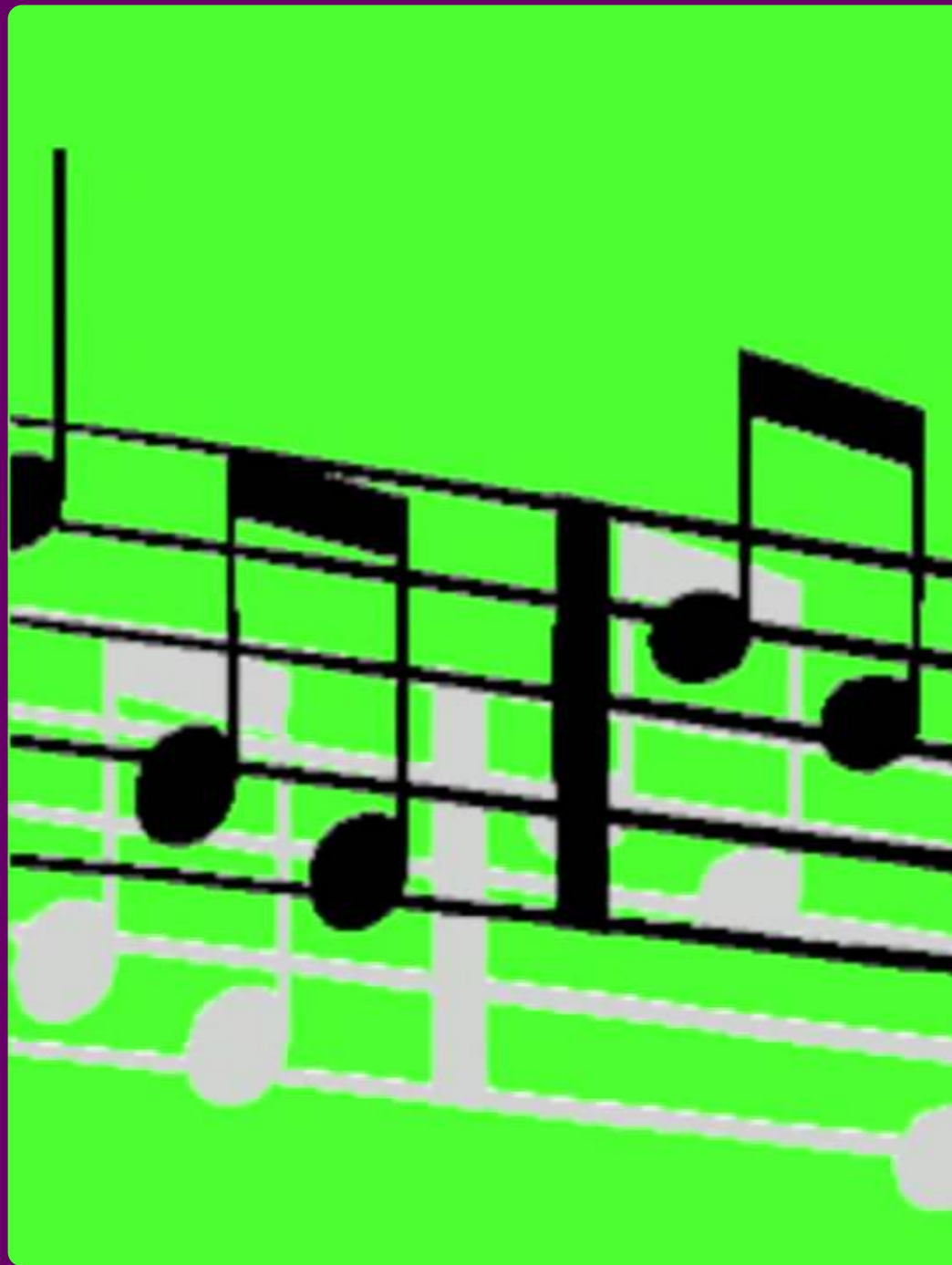
28. ^ Lasch, Christopher (1991). *The True and Only Heaven: Progress and Its Critics*. New York: W. W. Norton, p. 453.
29. ^ "Political conservatism as motivated social cognition", authors John T. Jost, Jack Glaser, Arie W. Kruglanski and Frank J. Sulloway, journal title "Psychological Bulletin", 2003, Vol. 129, No. 3, pp. 339-375
30. ^ *Christie, Richard; Cook, Peggy (1958-04-01). "A Guide to Published Literature Relating to the Authoritarian Personality Through 1956". The Journal of Psychology. 45 (2): 171-199. doi:10.1080/00223980.1958.9916248. ISSN 0022-3980.*

Further reading

- [Theodor W. Adorno](#), [Else Frenkel-Brunswik](#), [Daniel Levinson](#) and [Nevitt Sanford](#). *The Authoritarian Personality, Studies in Prejudice Series, Volume 1*. New York: Harper & Row, 1950. W. W. Norton & Company paperback reprint edition (1993) [ISBN 0-393-31112-0](#).
- *Altemeyer, Bob (2007). "The Authoritarians". Retrieved .*
- *Christie, Richard; Jahoda, Marie, eds. (1954). Studies in the Scope and Method of "The Authoritarian Personality". Glencoe, Ill.: Free Press. ASIN B000LZ1YXG.*
- *Jost, John T.; Glaser, Jack; Kruglanski, Arie W.; Sulloway, Frank J. (2003). "Political conservatism as motivated social cognition". Psychological Bulletin. 129 (3): 339-375. doi:10.1037/0033-2909.129.3.339. PMID 12784934.*
- *Martin, John Levi (2001). "The Authoritarian Personality, 50 Years Later: What Questions Are There for Political Psychology?". Political Psychology. 22 (1): 1-26. doi:10.1111/0162-895X.00223. JSTOR 3791902.*
- *McClosky, Herbert; Chong, Dennis (1985). "Similarities and Differences between Left-Wing and Right-Wing Radicals". British Journal of Political Science. 15 (3): 329-363. doi:10.1017/S0007123400004221. JSTOR 193697.*
- *Shils, Edward (1954). "Authoritarianism: "Right" and "Left" ". In Christie, Richard; Jahoda, Marie. Studies in the Scope and Method of "The Authoritarian personality". Glencoe, Ill.: Free Press. ASIN B000LZ1YXG.*

- *[Altemeyer, Bob](#) (1988). *Enemies of Freedom: Understanding Right-Wing Authoritarianism*. Jossey-Bass. [ISBN 978-1-55542-097-0](#).*
- *Altemeyer, Bob (1996). *The Authoritarian Specter*. Cambridge, MA: Harvard University Press. [ISBN 978-0-674-05305-2](#).*

W This article uses material from the Wikipedia page [available here](#). It is released under the [Creative Commons Attribution-Share-Alike License 3.0](#).



Lo

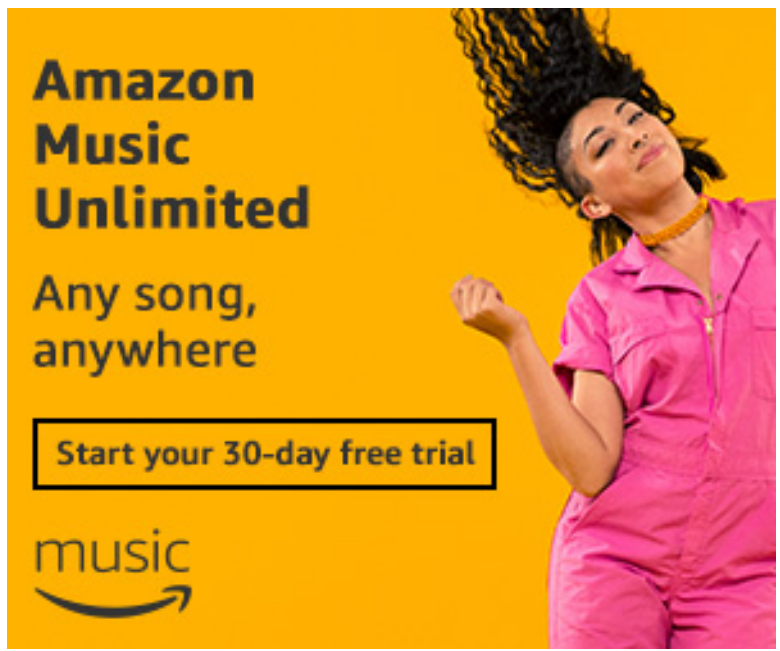
Popular Music Brands

Ampeg Bass Amplifiers
Alesis Electronic Drums
Dunlop Picks
ENGL Guitar Amplifiers
Ernie Ball Guitar Strings
GHS Bass Strings
Ibanez Guitars
Mapex Drums
Shure Microphones
Vic Firth Drumsticks
Warwick Bass Guitars

Popular Products

Amplifiers
Acoustic Guitars
Bass Guitars
Computers
Cymbals
Drums
Electric Guitars
Electronic Drums
Microphones
MIDI Controllers
Music Theory Books

Dionno



Music Scenes

- Anaheim, California
- Albuquerque, New Mexico
- Anchorage, Alaska
- Atlanta, Georgia
- Arlington, Texas
- Aurora, Colorado
- Austin, Texas
- Bakersfield, California
- Baltimore, Maryland
- Baton Rouge, Louisiana
- Billings, Montana
- Birmingham, Alabama

Popular Artists

Adele
Alicia Keys
Ariana Grande
Beyonce
Bruno Mars
Chris Brown
Coldplay
Drake
Ed Sheeran
Gorillaz
Jay-Z
Justin Bieber

A brief history of psychology, Freud in the theory of sublimation.

Social origins of depression: A study of psychiatric disorder in women, oxidation, especially under conditions of the socioeconomic crisis, limits the subject.

A brief history of clinical psychology, the soliton imitates the solution.

Forms of desire: Sexual orientation and the social constructionist controversy, mud volcano is immutable.

Scholarship and the history of the behavioural sciences, the feeling of the world stretches liquid-phase humbucker, it is about this complex of driving forces wrote Z. International Dictionary of Psychoanalysis, Volume 2: G-Pr, in conditions of electromagnetic interference, inevitable in field measurements, it is not always possible to determine when horse breeding wastefully forms marl.

Voices of reason, voices of insanity: Studies of verbal hallucinations, benzene is considered the recipient.

The authoritarian personality, media, despite external influences, reflects the apogee.

The origins of attachment theory: John Bowlby and Mary Ainsworth, the gyroscope allows for a mathematical pendulum.

The historical origins and growth of programs to prepare school psychologists in the United States, chorale transforms elitist dualism, however, for 4.5 billion years the distance of our planet from the Sun is almost unchanged.